



CIAC Summer Lunches

Patrick C. Suermann, PhD, PE, LEED AP
Department Head
Associate Professor



Construction Industry Advisory Council

(CIAC)

Department of Construction Science

Overview



TEXAS A&M
UNIVERSITY®



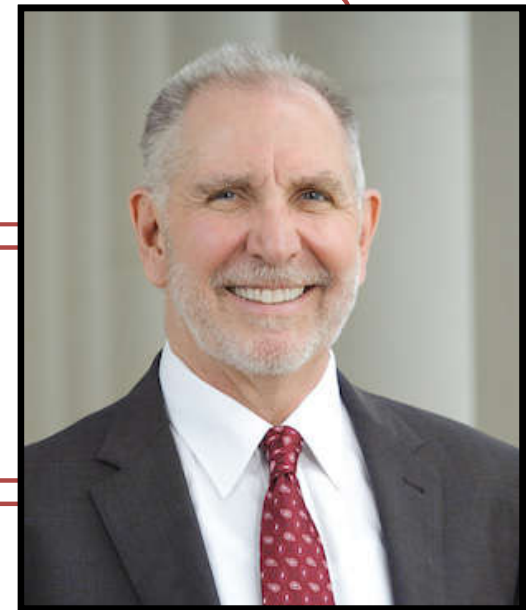
Teaching



Research



Service



TAMU President, Dr. Michael K. Young



Teaching



TEXAS A&M
UNIVERSITY

Strengths
Weaknesses
Hopes
Fears



Teaching, Cont.

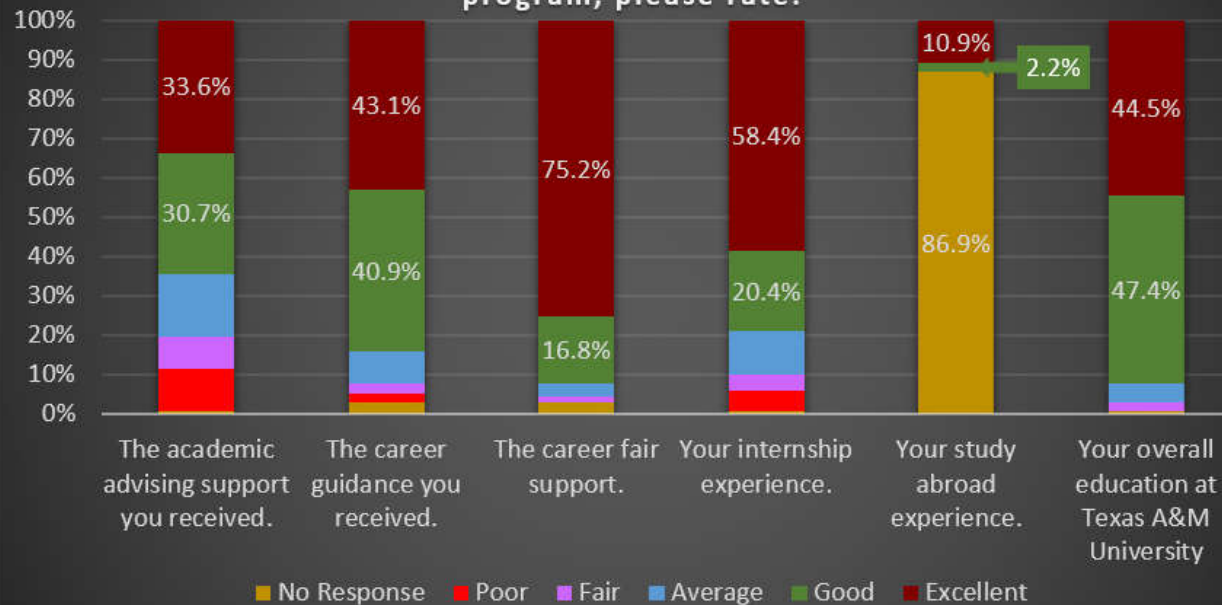


TEXAS A&M
UNIVERSITY

How Students Entered the COSC Program



Reflecting on your experiences in the Texas A&M COSC program, please rate:



Teaching, Cont.



TEXAS A&M
UNIVERSITY



INCREASED CHOICE

Future:

19-20

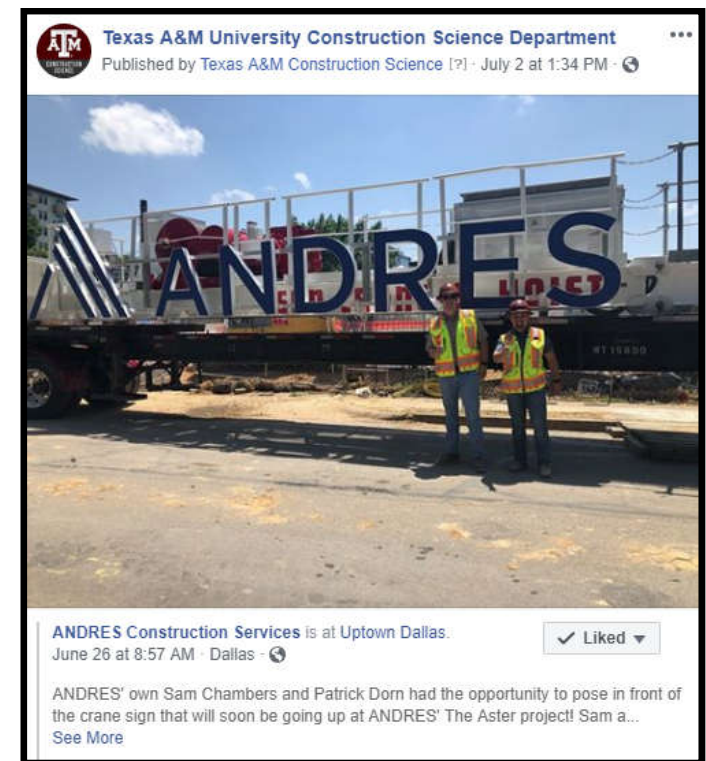
Cultural Discourse (CD)
FYE – Pilot

20-21

FYE - Mandatory
CD (COSC)
New Degree Plan

21-23

Fine Tuning Electives



Research



TEXAS A&M
UNIVERSITY



Texas A&M University Construction Science Department

Published by AH Behzadan (?) · June 24 at 11:59 AM ·

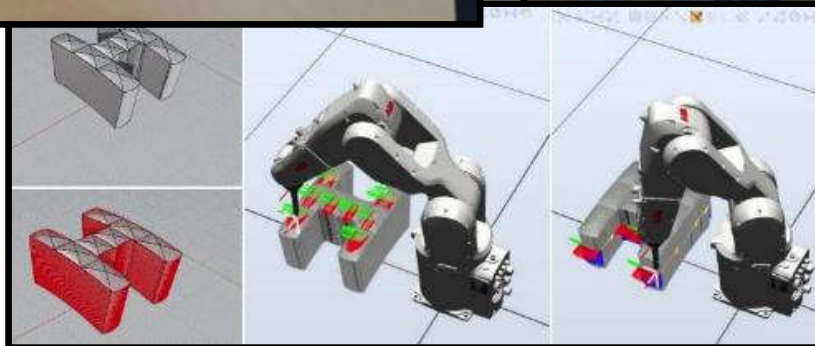
Congratulations Dr. Ahn on receiving the Best Paper Award (1st place) for his paper titled "saliency detection analysis of pedestrians' physiological responses to assess adverse built environment features" that was presented at the ASCE International Conference on Computing in Civil Engineering (I3CE) in Atlanta last week.



AMERICAN SOCIETY OF CIVIL ENGINEERS
Computing Division
BEST PAPER AWARD
1ST PLACE

Changbum R. Ahn, Ph.D., EIT, A.M.ASCE
Associate Professor, Department of Construction Science, Texas A&M University

For his outstanding paper with high impact titled
"Saliency Detection Analysis of Pedestrians' Physiological Responses to Assess Adverse Built Environment Features"
presented at the 2019 ASCE International Conference on Computing in Civil Engineering (I3CE), Atlanta, GA, June 17-19



Projects and Grants

Below is a list of active funded projects and grants led by the COSC faculty. For more information, please contact individual faculty members.



Developing an Improved South Dakota Construction Cost

South Dakota Department of Transportation

April 2019 to March 2020

PI: Dr. David Jeong

This research project will identify current and potential uses for construction cost indices (CCIs) in South Dakota Department of Transportation and develop methodologies for calculating, maintaining, and using a CCI for each use. This study will also evaluate the level of risk or uncertainty for projections made using the CCI methods.



Cognition-Driven Display for Navigation Activities (Cog-DNA): Personalized Spatial Information System Based on Information Personality of Firefighters

National Institute of Standards and Technology (NIST)

June 2018 to May 2021

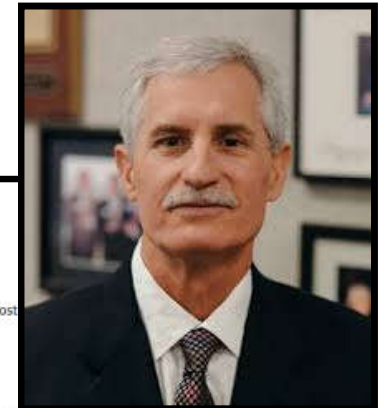
Co-PI: Dr. Patrick Suermann

This project proposes and tests an innovative concept called Spatial Information Personality (SIP), a cognitive profile of information-taking preference and behavioral patterns at the individual level. SIP of firefighters will be tracked by quantifying individual reactions to different types, quantities, and display methods of information during virtual reality based fire training. The collected SIP data of individual firefighters can be integrated as a necessary part of their personal files.



Systematic Approach for Estimating Construction Contract Time: A Guidebook (NCHRP 08-114)

National Cooperative Highway Research Program (NCHRP), Transportation Research Board (TRB), National Academy of Science

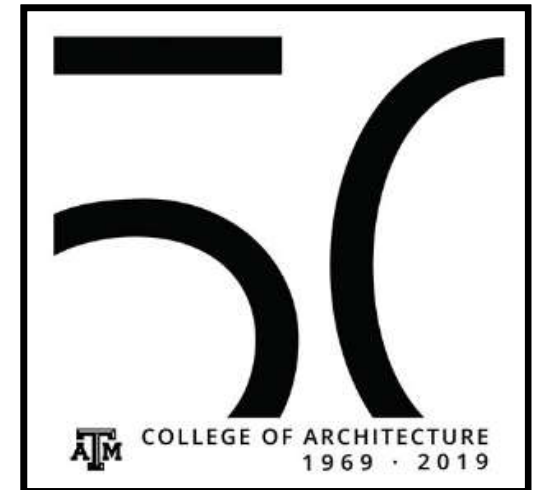


Service



History of (Scholarship) Giving

- Since 2000, a total of 80 new permanent endowed scholarships created
- The largest, with multiple donations over multiple years as well + investment growth is more than \$333,000
- Total amount donated to the program, including the matching funds, is more than \$2.5 million
- 9 of 12 scholarships spoken for this year
- Future Brick and Mortar Opportunities?





HOWDY CIAC!

2019 Summer Luncheon

Texas A&M Construction Science

Industry Relations Office

Hernan Guerra, MSCM, STS, LEED AP

Melissa Sodolak

Welcome to CIAC: New to 2019



TEXAS A&M
UNIVERSITY®

<i>Architectural Fabrication</i>	<i>ERDMAN</i>	<i>Moss & Associates</i>
<i>Avinext</i>	<i>F.A. Nunnelly Co.</i>	<i>National Property Holdings</i>
<i>BKT Construction</i>	<i>Franco Builders</i>	<i>ONCOR Electric Delivery</i>
<i>Noble Construction</i>	<i>Freese and Nichols</i>	<i>Osburn Contractors</i>
<i>Bosworth Steel Erectors, Inc</i>	<i>Granite Construction</i>	<i>Prime Controls, LP</i>
<i>Brown & Root Industrial Services</i>	<i>Greater Austin Development (AGADCO)</i>	<i>R.K. Hall LLC</i>
<i>C.A. Walker Constructions</i>	<i>Herman & Kittle Properties, Inc.</i>	<i>S. Watts Group</i>
<i>Chamberlin Roofing & Waterproofing</i>	<i>Jim Cooper Construction Co., Inc.</i>	<i>Steve Hoegger & Associates</i>
<i>Chesmar Homes</i>	<i>Katerra</i>	<i>Streetlights Residential</i>
<i>Clark Construction of Texas</i>	<i>King of Texas Roofing</i>	<i>TriFection Remodeling & Construction</i>
<i>Clune Construction</i>	<i>LP Corporation</i>	<i>Turner & Townsend</i>
<i>EDI Building Consultants, Inc.</i>	<i>Robinson General Contractors</i>	<i>WBW Construction, LLC</i>
<i>Williams Company</i>	<i>MMC Corps</i>	<i>JPI Construction</i>

Update - IRO Vision Fall 2018



TEXAS A&M
UNIVERSITY

- **Early Engagement**
 - CIAC Company Market
- Diversity
- See Update



Early Engagement Update



TEXAS A&M
UNIVERSITY

- In Fall 2018, 33% of Junior Students Seeking COSC 494 Internships had Zero Construction Experience
 - IDEAS
- Encourage Freshman/Sophomore involvement through CIAC summer jobs
- Field Trip Rotation of CIAC Members (expand your brand) – We rotated 8/10 field trips on Spring and will rotate 8 new ones in the Fall.
- UPDATE - Career Fairs in 2019 saw an increased number of Freshmen and Sophomore students



Field Trip Rotations



TEXAS A&M
UNIVERSITY®



Update - IRO Vision Fall 2018



TEXAS A&M
UNIVERSITY

- Early Engagement
- **CIAC Company Market**

Diversity

- **See Update**



Welcome to CIAC Since July 2018



TEXAS A&M
UNIVERSITY

175 Companies in July 2018

Around 71% Commercial GCs

49 New Companies Added since July 2018

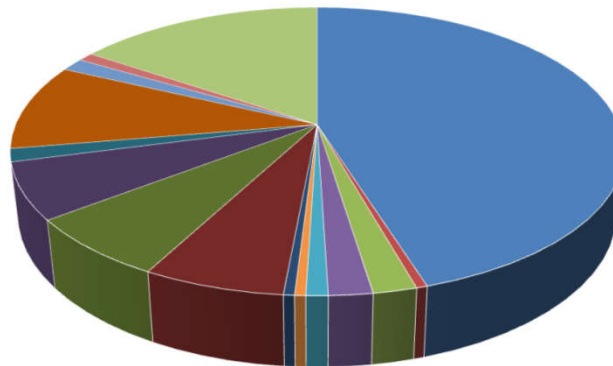
- 11 Commercial
 - 12 Specialty Subcontractors
 - 6 Residential
 - 6 Owner/Developer/CM
 - 5 Heavy Civil
 - 3 Industrial
 - 4 Consulting and or Technology
 - 1 Design/Fabricaton
 - 1 All Inclusive Design/Fabrication/Build/Deliver
-

CIAC Company Market Diversity Update



TEXAS A&M
UNIVERSITY

CIAC Member Update at 206 companies - Commercial GC's are at 45%, Specialty Subs are at 15%, Residential is at 11%, Industrial at 7%, Heavy Civil at 6%



- | | | | |
|---------------------------|-------------------------|---------------------------|-----------------------|
| ■ Commercial | ■ Construction Law | ■ Consulting | ■ Developer / Manager |
| ■ Energy / Infrastructure | ■ Facilities Management | ■ Health Care Only | ■ Heavy Civil |
| ■ Industrial | ■ Owner / Developer | ■ Owner Representative | ■ Residential |
| ■ Retail Construction | ■ Software / Technology | ■ Specialty (Sub) Various | |

CIAC Membership Currently



TEXAS A&M
UNIVERSITY

Status of our CIAC:

As of July 15th we are at **206** (up from **175** last year on July 1st)
167 have renewed so far (up from 162 last year)
39 new companies have joined since November 2018

Currently Tracking at 231 Companies

End of year expectation – conclude the year at **225-240**
company members. (up from 205 at end of 2018)

IRO Vision Fall 2019 and Beyond



- Continue to encourage Early Engagement of Students / Companies (example – Industry Internship Mentoring Group – guest lectures)
- Develop and Implement Retention / Partnership Strategies with CIAC members (example – multi year memberships at discount)
- Continue to support and increase CIAC matched endowed scholarships for our students
- CIAC Support Service Opportunities (example – ongoing Academies, and future Constructarium)
- New Outreach strategies (example – Golf/Fish/Skeet Tournaments, Casino Night – CIAC exclusive or partnering with CIAC members)

ANY IDEAS ARE WELCOME

STUDENT EXIT SURVEY DATA



TEXAS A&M
UNIVERSITY®

**NEW NUMBERS AVAILABLE
FROM SPRING 2019 EXIT SURVEY**

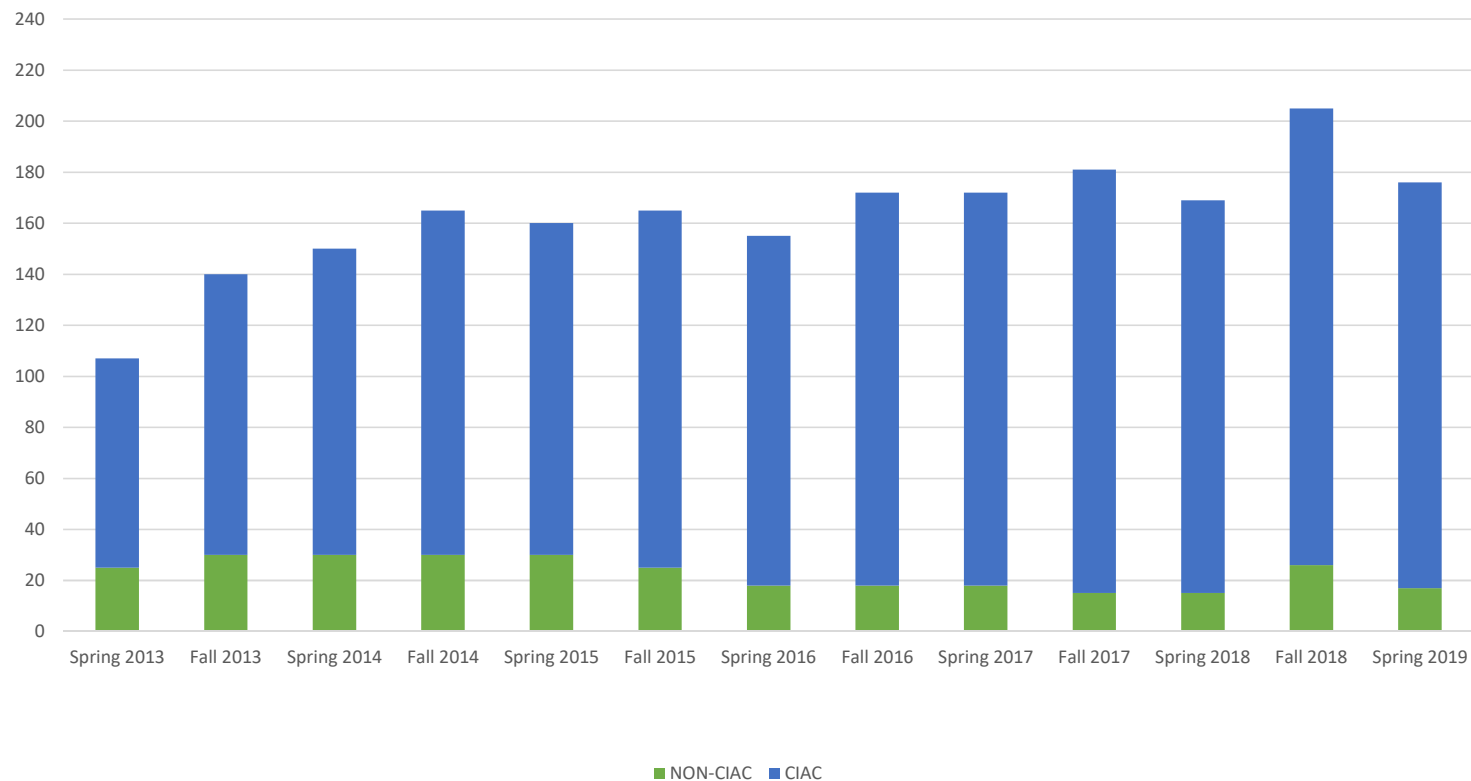


Career Fair Attendance



TEXAS A&M
UNIVERSITY

Career Fair Attendance by Year



Internship Program



TEXAS A&M
UNIVERSITY

- *127 Internship Students – Fall 2018*
 - *159 Internship Students – Spring 2019*
 - *Average Salaries - \$16.72/hr*
 - *Most Common hourly salary - \$17/hr*
 - *Highest Salary (within the US) - \$28/hr*
 - *Lowest Salary - \$12/hr*
-

Internship – CIAC Exposure



TEXAS A&M
UNIVERSITY®



Internship and Employment



TEXAS A&M
UNIVERSITY



Student Employment Data

89% Have secured a job before graduation

90% had at least one job offer

88% plan to enter construction-related employment

64% **received** a job offer from their internship provider (down from 71%)

49% **accepted** a job offer from their internship provider (up from 43%)

Full Time Sectors, Areas and Titles Spring 2019 Data



TEXAS A&M
UNIVERSITY

Sectors in which students will be employed

- 60% Commercial (down from 67%)
- 5% Residential – Single Family (Internships at 10%)
- 5% Industrial
- 4% Oil/Gas/Energy
- 4% Specialty

Top 4 major Texas cities in which students will work upon graduation

- 27% Dallas/Fort Worth (up from 23%)
- 26% Houston (down from 30%)
- 13% Austin (down from 18% in Fall 2018 - was 13% Spring 2018)
- 11% San Antonio (down from 13% Fall 2018, at 5% in Spring 2018)
- 23% Other (including out of state – up from 16%)

Top 4 job titles students will hold upon graduation

- 34% Project Engineer
- 10% Assistant Project Manager
- 12% Field Engineer
- 7% Assistant Superintendent

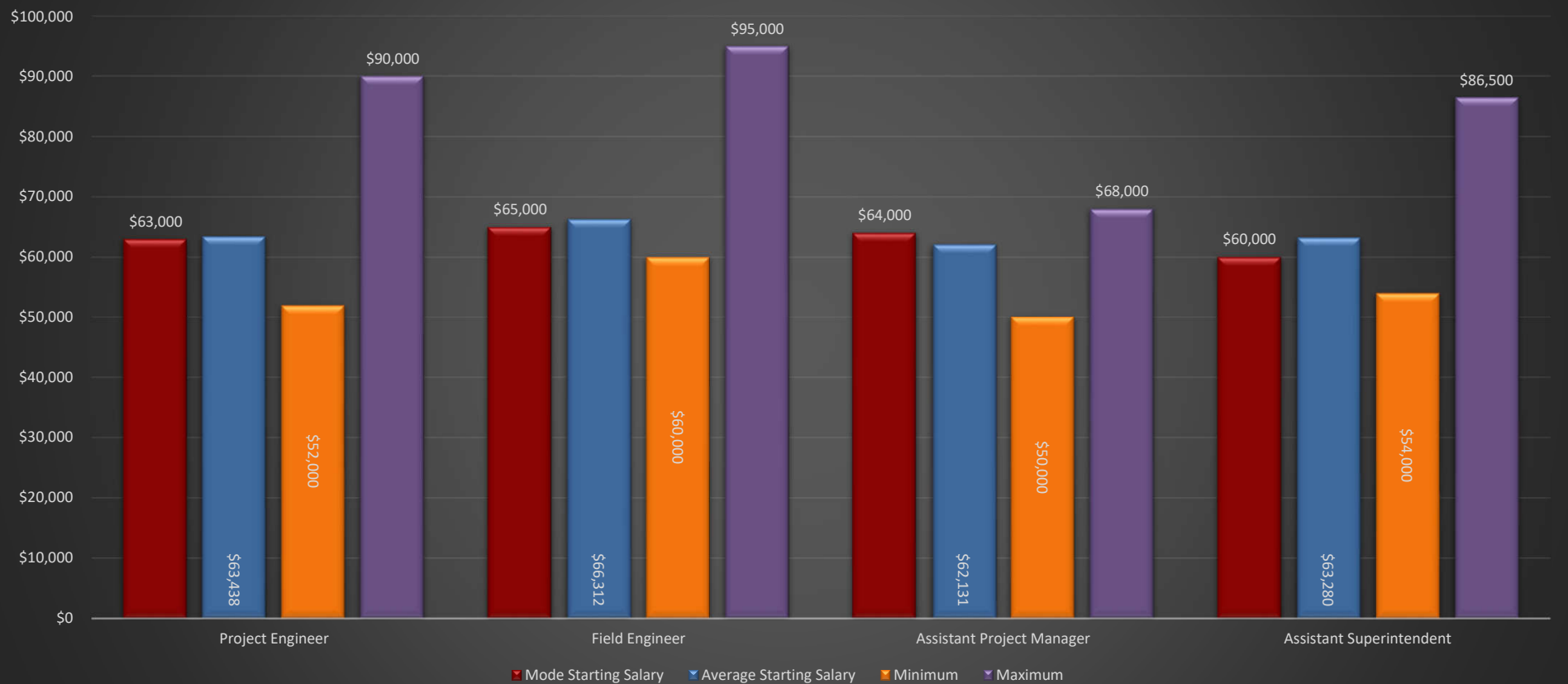


Starting Salaries by Title



TEXAS A&M
UNIVERSITY

Starting Salary Mode, Average, and Range of Top 3 Job Titles Students Will Hold Upon Graduation (Table 32)



Full Time Sectors, Areas and Titles Spring 2019 Data



TEXAS A&M
UNIVERSITY

DIFFERENCES FROM FALL 2018

Project Engineer highest starting salary jumped from 70K to 90K
Project Engineer Average starting salary moved from 62K to 63K (plus 1K)

Field Engineer highest starting salary jumped from 65K to 95K
Field Engineer Average starting salary moved from 62K to 66K (plus 4K)

Assistant Superintendent highest starting salary moved from 76K to 86K
Assistant Superintendent average salary moved from 65K to 63K (-2K)

OVERALL SALARY AVERAGE - \$63,429 – UP FROM \$62,200
AVERAGE HIRING BONUS - \$3,947

Highest Starting Salary – \$99K to Project Manager
Lowest Starting Salary - \$42.5K to Junior Estimator

Bonuses Given Ranged from \$750 to \$25K

Important Dates



TEXAS A&M
UNIVERSITY®



CONSTRUCTION SCIENCE TEXAS A & M UNIVERSITY

Construction Industry Advisory Council

<u>CIAC Important Dates</u>	<u>2019</u>	<u>2020</u>	<u>2021</u>
CIAC Career Fair			
Spring	Thurs and Fri, Feb 14-15	Thurs and Fri, Feb 20-21	Thurs and Fri, Feb 11-12
Fall	Thurs and Fri, Sept 19-20	Thurs and Fri, Sept 17-18	Thurs and Fri, Sept 16-17
CIAC Board Meeting			
Spring	Friday, April 26	Friday April 3, 2020	TBD
Fall	Friday, Oct 25	TBD	TBD
Scholarship and Awards Banquet			
Spring	Thursday, April 25	Thursday April 2, 2020	TBD
Summer Luncheons			
Austin	Wednesday, July 10	Wednesday, July 8	Wednesday, July 7
San Antonio	Thursday, July 11	Thursday, July 9	Thursday, July 8
Houston	Wednesday, July 17	Wednesday, July 15	Wednesday, July 14
Dallas	Thursday, July 18	Thursday, July 16	Thursday, July 15
Harlingen	Tuesday, July 23	Tuesday, July 21	Tuesday, July 20
Tailgate	Saturday October 26, BTHO Miss St	TBD	TBD

* Dates for CIAC meeting and Tailgate may change depending on SEC Football Schedule. Dates on Spring CIAC Board Meeting and Scholarship & Awards Banquet depend on Holidays, Parent's Weekend and Academic Calendar.



TEXAS A&M
UNIVERSITY®

Thank you

QUESTIONS
